

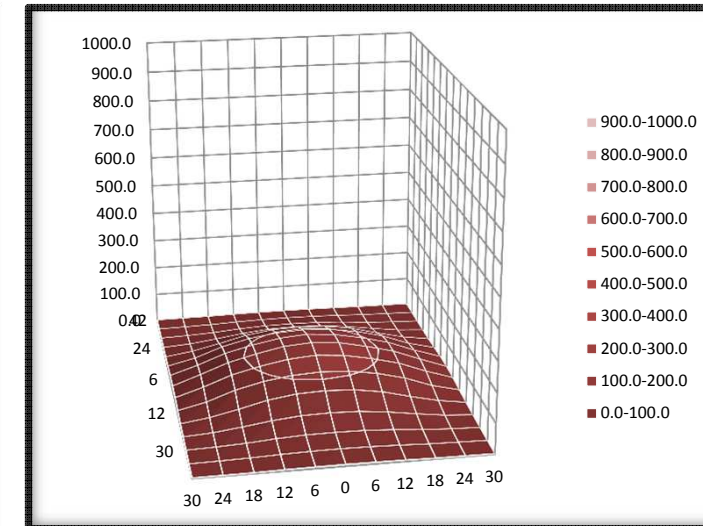
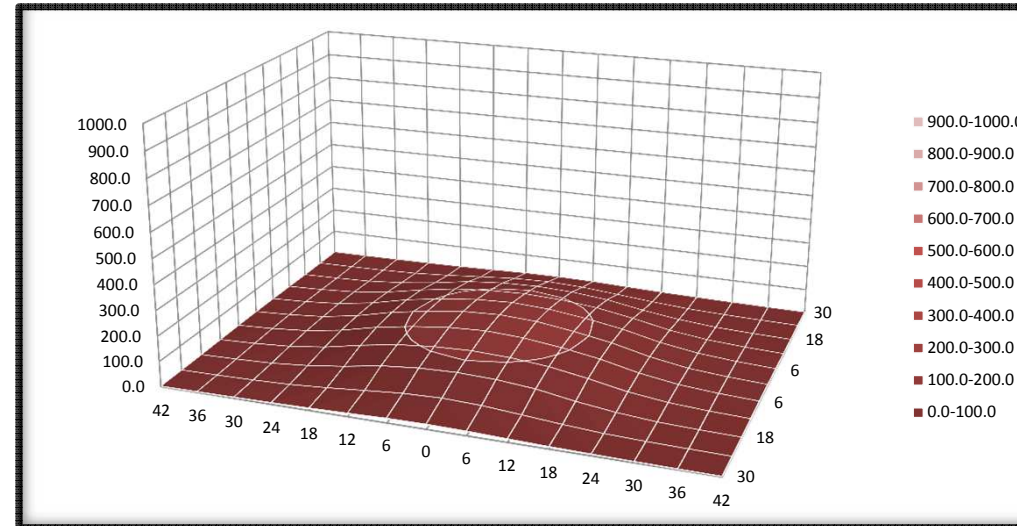
# Aqua Medic Qube 50

**Modul:** Aqua Medic Qube 50  
**Raumtemperatur:** 19 Grad Celsius  
**Messinstrument:** kalibriertes Spektrometer  
**Abstand von Sensor bis uk Modul:** 30 cm  
**Raum:** Abgedunkelt  
**Einheit:** PAR in  $\mu\text{mol}/\text{m}^2/\text{sec}$   
**Leistungsangabe Hersteller:** 50 Watt

cm/cm	42	36	30	24	18	12	6	0	6	12	18	24	30	36	42			
30	2.0	3.0	4.5	6.5	9.0	13.0	17.5	19.0	17.5	13.0	9.0	6.5	4.5	3.0	2.0	315.00		
24	2.5	4.5	7.5	12.5	22.5	35.0	47.0	52.0	47.0	35.0	22.5	12.5	7.5	4.5	2.5	315.00	286.00	
18	3.0	6.5	12.0	24.5	43.5	68.5	82.0	87.0	82.0	68.5	43.5	24.5	12.0	6.5	3.0	567.00	524.00	
12	4.5	10.0	19.5	38.0	67.0	91.5	105.0	110.5	105.0	91.5	67.0	38.0	19.5	10.0	4.5	781.50	713.50	
6	5.5	12.5	24.5	47.5	81.0	105.0	122.5	130.0	122.5	105.0	81.0	47.5	24.5	12.5	5.5	927.00	842.00	
0	6.0	13.5	25.5	50.0	85.0	110.0	130.0	137.0	130.0	110.0	85.0	50.0	25.5	13.5	6.0	977.00	887.00	
6	5.5	12.5	24.5	47.5	81.0	105.0	122.5	130.0	122.5	105.0	81.0	47.5	24.5	12.5	5.5	927.00	842.00	
12	4.5	10.0	19.5	38.0	67.0	91.5	105.0	110.5	105.0	91.5	67.0	38.0	19.5	10.0	4.5	781.50	713.50	
18	3.0	6.5	12.0	24.5	43.5	68.5	82.0	87.0	82.0	68.5	43.5	24.5	12.0	6.5	3.0	567.00	524.00	
24	2.5	4.5	7.5	12.5	22.5	35.0	47.0	52.0	47.0	35.0	22.5	12.5	7.5	4.5	2.5	315.00	286.00	
30	2.0	3.0	4.5	6.5	9.0	13.0	17.5	19.0	17.5	13.0	9.0	6.5	4.5	3.0	2.0	315.00		
																Summe	6'418.00	5'618.00
																<b>PAR pro Watt</b>	<b>142.62</b>	<b>124.84</b>
																<b>PAR im Mittel</b>	<b>38.90</b>	<b>69.36</b>

Beleuchtungsstärke 100 % x = 0.197  
 Leistungsaufnahme gemessen 45.0 Watt y = 0.127  
 Lux 4'270 lx z = 0.676

H = 30cm

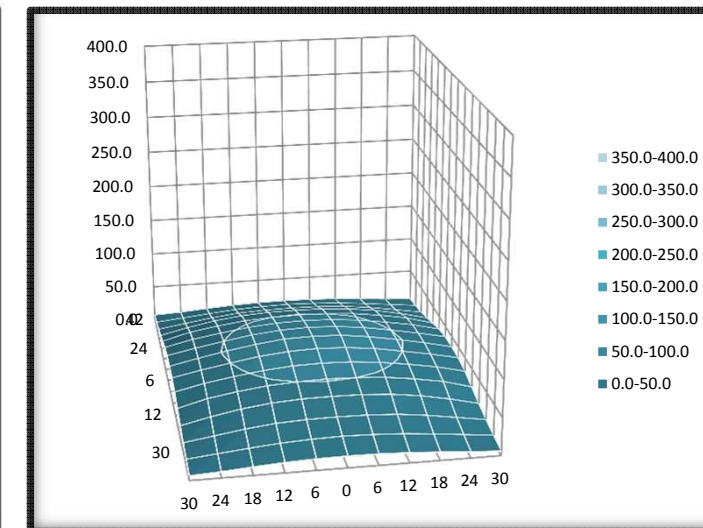
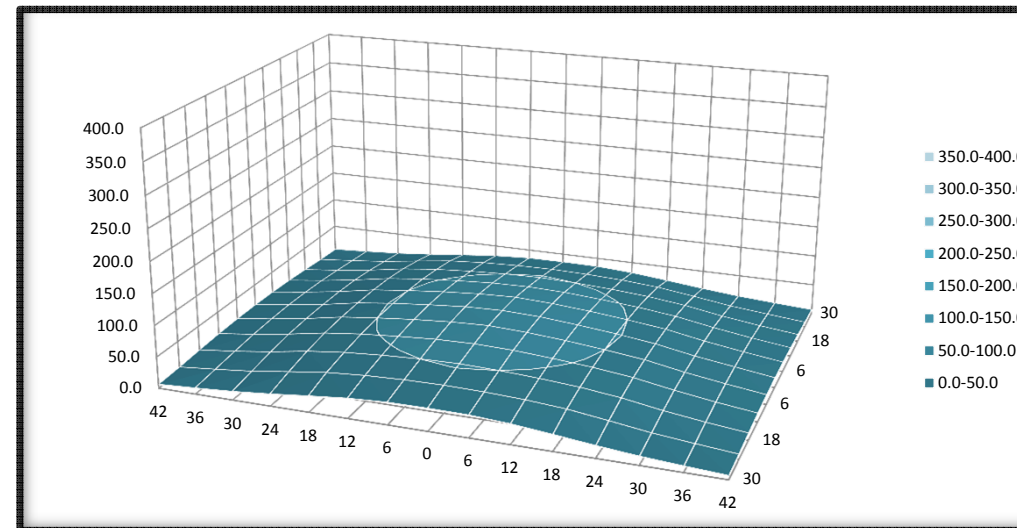


**Modul:** Aqua Medic Qube 50  
**Raumtemperatur:** 19 Grad Celsius  
**Messinstrument:** kalibriertes Spektrometer  
**Abstand von Sensor bis uk Modul:** 45 cm  
**Raum:** Abgedunkelt  
**Einheit:** PAR in  $\mu\text{mol}/\text{m}^2/\text{sec}$   
**Leistungsangabe Hersteller:** 50 Watt

cm/cm	42	36	30	24	18	12	6	0	6	12	18	24	30	36	42			
30	6.0	9.5	13.5	19.0	25.5	31.5	35.0	35.5	35.0	31.5	25.5	19.0	13.5	9.5	6.0	315.50		
24	8.0	13.5	19.5	28.0	36.0	40.5	43.0	44.0	43.0	40.5	36.0	28.0	19.5	13.5	8.0	421.00	339.00	
18	11.0	17.5	25.5	35.5	42.5	47.0	50.0	51.5	50.0	47.0	42.5	35.5	25.5	17.5	11.0	509.50	401.50	
12	13.5	21.0	30.0	40.5	47.5	52.5	56.5	58.0	56.5	52.5	47.5	40.5	30.0	21.0	13.5	581.00	452.00	
6	15.0	23.0	32.0	43.0	50.0	56.0	60.5	63.0	60.5	56.0	50.0	43.0	32.0	23.0	15.0	622.00	482.00	
0	15.5	24.0	32.5	43.5	51.0	57.0	62.0	64.0	62.0	57.0	51.0	43.5	32.5	24.0	15.5	635.00	491.00	
6	15.0	23.0	32.0	43.0	50.0	56.0	60.5	63.0	60.5	56.0	50.0	43.0	32.0	23.0	15.0	622.00	482.00	
12	13.5	21.0	30.0	40.5	47.5	52.5	56.5	58.0	56.5	52.5	47.5	40.5	30.0	21.0	13.5	581.00	452.00	
18	11.0	17.5	25.5	35.5	42.5	47.0	50.0	51.5	50.0	47.0	42.5	35.5	25.5	17.5	11.0	509.50	401.50	
24	8.0	13.5	19.5	28.0	36.0	40.5	43.0	44.0	43.0	40.5	36.0	28.0	19.5	13.5	8.0	421.00	339.00	
30	6.0	9.5	13.5	19.0	25.5	31.5	35.0	35.5	35.0	31.5	25.5	19.0	13.5	9.5	6.0	315.50		
																Summe	5'533.00	3'840.00
																<b>PAR pro Watt</b>	<b>122.96</b>	<b>85.33</b>
																<b>PAR im Mittel</b>	<b>33.53</b>	<b>47.41</b>

Beleuchtungsstärke 100 % x = 0.197  
 Leistungsaufnahme gemessen 45.0 Watt y = 0.127  
 Lux 1'960 lx z = 0.676

H = 45cm



**Modul:** Aqua Medic Qube 50  
**Raumtemperatur:** 19 Grad Celsius  
**Messinstrument:** kalibriertes Spektrometer  
**Abstand von Sensor bis uk Modul:** 60 cm  
**Raum:** Abgedunkelt  
**Einheit:** PAR in  $\mu\text{mol}/\text{m}^2/\text{sec}$   
**Leistungsangabe Hersteller:** 50 Watt

cm/cm	42	36	30	24	18	12	6	0	6	12	18	24	30	36	42			
30	11.5	14.5	18.5	21.5	23.5	25.0	26.0	26.5	26.0	25.0	23.5	21.5	18.5	14.5	11.5	307.50		
24	13.5	17.0	21.5	24.5	26.5	28.5	29.5	30.0	29.5	28.5	26.5	24.5	21.5	17.0	13.5	352.00	248.00	
18	15.5	20.0	23.5	26.5	29.0	31.0	32.5	33.0	32.5	31.0	29.0	26.5	23.5	20.0	15.5	389.00	271.00	
12	17.0	21.5	25.0	28.0	30.5	33.0	34.5	35.0	34.5	33.0	30.5	28.0	25.0	21.5	17.0	414.00	287.00	
6	17.5	22.0	25.5	28.5	31.5	34.0	35.5	36.0	35.5	34.0	31.5	28.5	25.5	22.0	17.5	425.00	295.00	
0	18.0	22.5	26.0	29.0	32.0	35.0	36.0	37.0	36.0	35.0	32.0	29.0	26.0	22.5	18.0	434.00	301.00	
6	17.5	22.0	25.5	28.5	31.5	34.0	35.5	36.0	35.5	34.0	31.5	28.5	25.5	22.0	17.5	425.00	295.00	
12	17.0	21.5	25.0	28.0	30.5	33.0	34.5	35.0	34.5	33.0	30.5	28.0	25.0	21.5	17.0	414.00	287.00	
18	15.5	20.0	23.5	26.5	29.0	31.0	32.5	33.0	32.5	31.0	29.0	26.5	23.5	20.0	15.5	389.00	271.00	
24	13.5	17.0	21.5	24.5	26.5	28.5	29.5	30.0	29.5	28.5	26.5	24.5	21.5	17.0	13.5	352.00	248.00	
30	11.5	14.5	18.5	21.5	23.5	25.0	26.0	26.5	26.0	25.0	23.5	21.5	18.5	14.5	11.5	307.50		
																Summe	4'209.00	2'503.00
																<b>PAR pro Watt</b>	<b>93.53</b>	<b>55.62</b>
																<b>PAR im Mittel</b>	<b>25.51</b>	<b>30.90</b>

Beleuchtungsstärke 100 % x = 0.197  
 Leistungsaufnahme gemessen 45.0 Watt y = 0.127  
 Lux 1'150 lx z = 0.676

H = 60 cm

